

Health & Safety Management Course Brochure

Health & Safety Management

Course Overview

This qualification provides a thorough understanding of health and safety emphasizing the importance of monitoring staff and controls. It also details the need for a structured management approach to health and safety and the key factors in implementing health and safety policy. It is suitable for top management and those aspiring to be.

Delivery Option

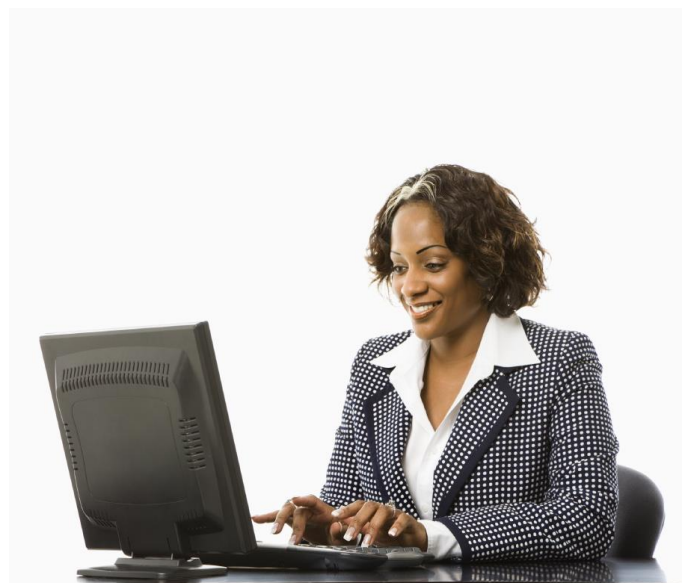
Weekend/Weekend

Duration

Weekend	Weekday
2 Weekends	4 days

Course Location

Lagos | Abuja | PH





Course Content

Outline

- ✓ Health and safety law
- ✓ The workplace and work equipment
- ✓ Risk assessment
- ✓ Manual handling
- ✓ Hazardous substances
- ✓ Ergonomics and workstation design
- ✓ Working at height
- ✓ Transport and vehicles
- ✓ Noise and vibration
- ✓ Legislation
- ✓ Accidents in the workplace
- ✓ Ill health in the workplace
- ✓ Health and safety organisation and management
- ✓ The role of supervisors



Course Fit For

Industry/Sector

- ✓ Oil and Gas
- ✓ Aviation
- ✓ Construction
- ✓ Development Sector
- ✓ Public Sector
- ✓ Financial Services
- ✓ Agriculture

Discipline

- ✓ Engineering
- ✓ Science
- ✓ Social Science
- ✓ Business Management
- ✓ Information Technology
- ✓ Finance



Course Benefits

For Whom

- | | | |
|--------------|------------------------|------------------|
| ✓ Job Seeker | ✓ Working Professional | ✓ Business Owner |
|--------------|------------------------|------------------|

Job Seeker

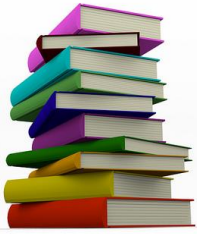
- It gives you a competitive advantage over others
- It increases your earning potentials
- It makes you eligible for employment in any sector.
- The HSE qualification is mandatory for getting a job in some sectors.

Working Professional

- It gives you a platform to easily switch jobs or industries
- It increases your earning potential
- Get a lucrative job in top sectors of the economy.

Business Owner

- Your clients, business partners and colleagues respect you
- It boosts your company profile
- It gives you a platform for consulting
- Easily set up an HSE system for your organization.



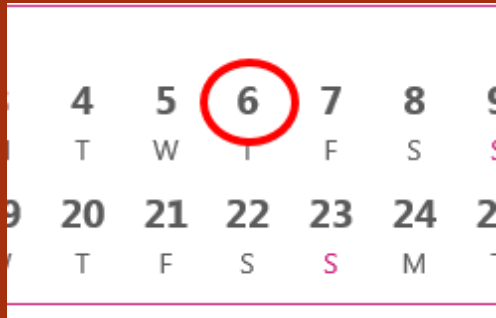
Course Pack

What you get

- International certificate (Awarded by Chartered Institute For Environmental Health, UK)
- Training books
- Examination Pack
- Tea & lunch
- Qualified Instructor

Support Materials

- Refreshment (Tea & Lunch)
- Placement support (*Optional*)



Course Calendar

Locations	Dates for Upcoming Classes	
	Weekday	Weekend
Lagos	15 th Apr - 18 th Apr	20 th Jul - 28 th Jul
Abuja	Contact Us	4 th May - 25 th May
Port Harcourt	Contact Us	3 rd Aug - 24 th Aug

Options	Days & Time for Classes	
	Training Days	Training Time
Weekend (Lagos)	Saturday	9 am - 5 pm
	Sunday	1pm - 6pm
Weekend (Abuja & PH)	Saturday	9 am - 1 pm
For training dates for subsequent months kindly contact our course coordinator.		



Course Fees

Locations	Fees	
	Registration	Tuition
Lagos	₦5,000	₦74,000
Abuja	₦5,000	₦74,000
PH	₦5,000	₦74,000



Payment Policy

Registration Policy	Tuition Policy
<ul style="list-style-type: none"> ✓ Reg. closes 2 weeks before lectures ✓ Late reg. will attract N3000 additional admin fee ✓ Reg. fee should be paid to P&F Accounts ✓ Reg. fee is non-refundable ✓ After reg. payment complete reg. form on our website 	<ul style="list-style-type: none"> ✓ Tuition can be paid one off or in instalment ✓ Installment payment will be paid in 2 equal instalment ✓ To commence lectures full/half tuition must have been paid ✓ Tuition is non-refundable, but can be transferred to other courses ✓ Tuition for classes attended is non-refundable
<p>Account Name: Piston & Fusion Ltd Account Number: 2015242578 Bank: First Bank of Nigeria</p>	



Steps To Enroll

Steps

1. Pay the registration fee 2 weeks before training kick off
2. Send your payment details to fees@pistonandfusion.org
3. Visit www.pistonandfusion.org click on register now tab and complete Registration form.
4. Upon confirmation of your registration an electronic receipt will be sent to your mail.
5. Pay the tuition on or before lecture kick off

Account Name: Piston & Fusion Ltd

Account Number: 2015242578

Bank: First Bank

How We Deliver The Course

1. Facilitator will lead the sessions
2. Past exam questions will be treated for sessions
3. Participant will work in groups to solve problems
4. Participants will complete various tasks
5. Examination will be conducted at the end of the training on the fourth day

Course Approach



Health & Safety Management

Suitable for anyone in a work environment

- Prerequisite: None
- No of Questions: 40 questions
- Question Type: Multiple choice exam
- Exam Time: 1 hour 30mins
- Exam Format:
 - *Paper Based*
- Suggested Projection: NEBOSH

Contact Us

Location	Addresses
Lagos	122A Obadina street, Omole Phase 1, Ikeja Lagos
Abuja	Savvy Instant Offices, No 22 Kumasi Crescent Wuse 2, Abuja.
Port Harcourt	Randolph Hotel, 101, Old Aba Road, Rumuogba, Port- Harcourt
Mobile: +234 (0) 8185744692, +234 (0) 8086615585	
Email Address: info@pistonandfusion.org Website Address: www.pistonandfusion.org	